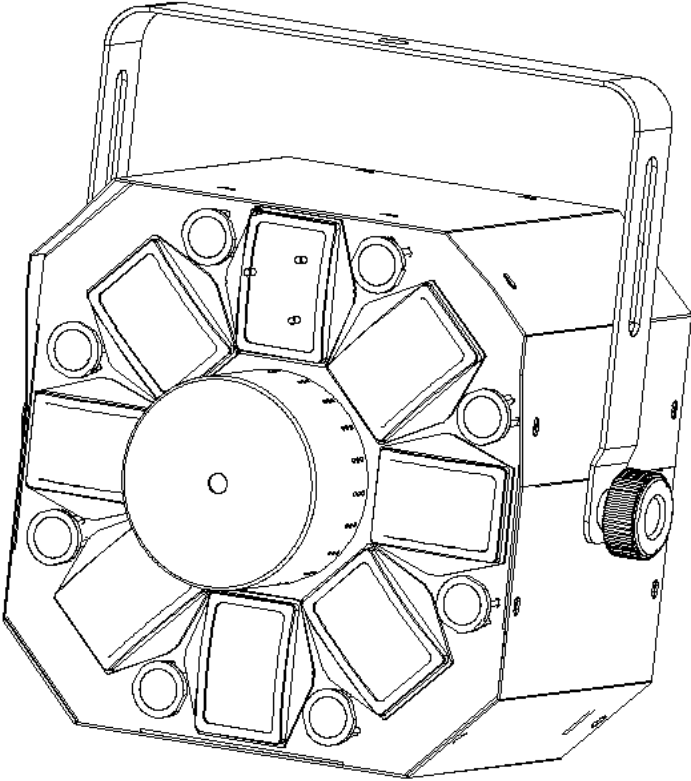


LED Strobe Laser Light

User Manual



LASERLIGHT



Please read this manual carefully before use!

Contents

Introduction-----P2

Silkscreen on light -----P3

Safety instruction and product specification-----P4

Menu operation, function -----P5

Channel instruction and controller connection-----P6

Address setting----- P7

Structure and material-----P8/P9

Installation and Size----- P10

Wiring diagram----- P11

Introduction

Thank you for purchasing this product. To optimize the performance of this product, prior to use, please read these operating instructions carefully to familiarise yourself with the basic operation of this unit. Please keep the manual in safe place for future reference.

This unit has been tested at our factory before being shipped to you, there is no assembly required.

Once after received this product, please take and put carefully. And check cautiously that whether the product was damaged or not during the transportation.

Checking Parts

Please check if the following parts are included:

- 1 x LED Laser Light
- 1 x Power cable
- 1 x User manual

Caution

Before out factory, this device has passed strict inspection, functions stable and perfect packing. If this device will be operated in any way different to the one described in this manual, the product may suffer damages and the guarantee becomes void. Furthermore, any other operation may lead to dangers like short circuit, burns, electric shock, crash etc. If any technology changes of this manual, company do not notice in further and have interpretation.

CAUTION!



Keep this device away from rain and moisture!



Unplug mains lead before opening the housing!



Warning!

Damages caused by the disregard of this user manual are not subject to warranty. The dealer will not accept liability for any resulting defects or

Silkscreen on light

CE compliant

Only indoor use

RoHS Certificate

The minimum distance from lighted objects(meter)

$T_a =$ Max. Ambient Temp



$T_B =$ ---- ° C
.....Max. Housing Temp

..... Safety caution


Careful burns



-----Careful electric shock

---- Not suitable for directly installed on the surface of ordinary combustible materials

一. Safety Instructions

- Please open and check whether break or not for transport once receive this fixture, if yes, not use it and contact dealer or manufacture as soon as possible.
 - The Max applicable temperature for the light is 40°C. Do not use the light under or above the temperature. $t_a=40^{\circ}\text{C}$
 - The fixture is applicable for many occasions, it should keep clean, and avoid long use in overheating or dusty environment. To prevent the fixture from the chemical liquid .
 - User must be careful of fire, heat, electric and fall-off that make heavy or fatal injury. Please read this user manual carefully before power on and installation, following safety and operation instruction in it. If still have any questions, please contact dealer or manufacture.
 - User must following this user manual, do not open fixture by yourself, if any problems, please contact professional technician, maintenance should by technician.
Do not power on or start the fixture before installation, please stop after working more than 8 hours, which will longer use life.
 - Fixed installation, do not by strong shocks.
 - The minimum distance between light and the illuminated surface must be more than 1 meter.
- 
- Never look directly into the light source to avoid hurt to eyes (especially epileptics)!
 - When dustproof glass at light output breaks, cracks or other visible damage, user should replace with new glass to continue to use.



working

二. Installation

- When install this equipment please make sure there's no flammable surfaces (decorated things, etc) and minimum distance of 0.5M from the equipment to the flammable.



- The installation of the effect has to be built and constructed in a way that it can hold 10 times the weight and without any harming deformation.
- The installation must always be secured with a secondary safety attachment, e.g. an appropriate safety rope. Never stand directly below the device when mounting, removing or servicing the fixture.

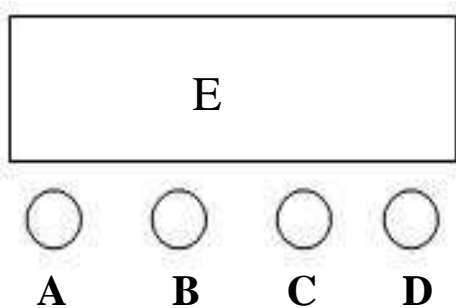
三. Technical Specifications

1. Power supply: AC100V~240V 50/60Hz

2. Amp: : BGDP ϕ 5x20mm 250VAC T2A
3. Rated power: 50W
4. Laser: R:150m/650nm,G:50mw/532nm
5. LED : 6pcs 5W RGBWAP ; 8pcs 3W White LED
6. LED effect:Derby
7. Laser effect:8 grating effect
8. Control mode: Sound Active/ Auto-play/DMX512/Master-Slave
9. Channel : 10

10. Scan system : Step motor
11. Operating temperature:10°C~40°C
12. Inner Packing(mm):340*270*340
13. Outer Packing(mm):700*560*370 (4pcs)

四、LED Digital Display



- A. (MENU)
- B. (UP)
- C. (DOWN)
- D. (ENTER)
- E. LED Display

Operating Instruction: press button marked as “A” to select a function, For details, please see the “OPERATION MENU” section. Press button marked as “B” or button marked as “C” to modify values . Press button marked as “D” to save your settings.

LED Digital Display Operation Menu:

No.	Menu	Function
1	Addr	DMX address DOWN/UP to +/- (1-512)
2	AUTO	Aut1,Auto Play1,six colors led derby effect auto play
		Aut2,Auto Play2, white led auto play
		Aut3,Auto Play3, laser auto play
		Aut4,Auto Play4, LED derby and laser mixing auto play
		Aut5, Auto Play5, all effects auto play
		SPEE,auto speed 0-99
3	Soun	Sou1,Sound Active 1, six colors led sound
		Sou2,Sound Active 2, white led sound
		Sou3,Sound Active 3, laser sound
		Sou4, sound Active 4, Led derby and laser mixing sound
		Sou5, sound Active 5, all effects sound
		SESE,sound sensitivity 0-99
4	Vers	Ve1.0

1. When starting up, it will display the last time's operation. In case without any buttons, it will close screen automatically after 20 seconds. When no DMX, the first dot of LED display will keep on. When has DMX, the first dot will blink

2. The master light can choose any mode of Auto/Sound modes, the slave light is set as A001, Just one light could be settled to be master.

3. At most 10 lights could be linked in one electricity source.

五、 Function:

1. Press MENU to select Addr / Auto/Soun / Version , Press ENTER to the next menu or save, Press UP / DOWN to select function, Press ENTER to save; Long Press MENU to exit.
2. Addr, Address setting , DOWN/UP to select 1-512
3. Auto , Auto mode
4. Soun , Sound mode
5. Vers , version

六、 Channel

	Value 0-255	Details
--	-------------	---------

LED Strobe Laser Light User Manual

CH1	Control Mode	0-9	Black- out
		10-29	Auto Play1(Six colors LED auto)
		30-49	Auto Play2 (White LED auto)
		50-69	Auto Play3 (Laser auto)
		70-89	Auto Play4 (Led derby and laser Mixing auto)
		90-109	Auto play5(LED derby,stroke and laser mixing auto)
		110-129	Sound Control 1(Six colors LED sound)
		130-149	Sound Control2 (White LED sound)
		150-169	Sound Control3 (Laser sound)
		170-189	Sound Control4 (Led derby and laser mixing sound)
		190-209	Sound control5(Led derby, strobe and laser mixing sound)
		210-255	DMX Mode
CH2	RGBWYVP Control	0-9	RGBWYP black-out
		10--198	Choose colors (63 groups) , each 3 data for 1 color group
		199-225	Color chase1 (single color)
		226-255	Color chase 2(single or multiple)
CH3	Auto Play LED Eotic Speed	0-255	Auto speed, LED color chase speed from slow to fast
CH4	LED Strobe	0-9	LED No strobe
		10-244	LED Strobe Speed from slow to fast
		245-255	LED strobe by sound
CH5	White Color LED	0-9	Whit LED black out
		10-134	White LED output position choose, 5 data for only 1 choose
		135-255	White LED chase effect
CH6	White Strobe and Eotic Speed	0-127	no strobe, but White LED chase speed from slow to fast
		128-255	With strobe, white LED chase speed from slow to fast
CH7	Laser color control	0-9	Laser off
		10-49	Red
		50-89	Green
		90-129	Red and Green
		130-169	Red and Green flicker
		170-209	Green and Red flicker
		210-249	Red, green synchronous flicker

LED Strobe Laser Light User Manual

		250-255	Red, green alternative flicker
CH8	Laser Strobe Control	0-9	Strobe Off
		10-244	Strobe Speed (from slow to fast)
		245-255	Laser strobe by sound
CH9	LED Step Motor Control	0-8	Step motor Off
		9-127	Step Motor clockwise from slow to fast
		128-255	Step Motor counterclockwise from slow to fast
CH10	Laser Step Motor Control	0-127	Laser pattern choose
		128-255	Laser pattern chase from slow to fast

七、DMX-512 connection

3-Pins DMX Out

(Female)



1 Earth

2 DMX-

3-Pins DMX In

(Male)



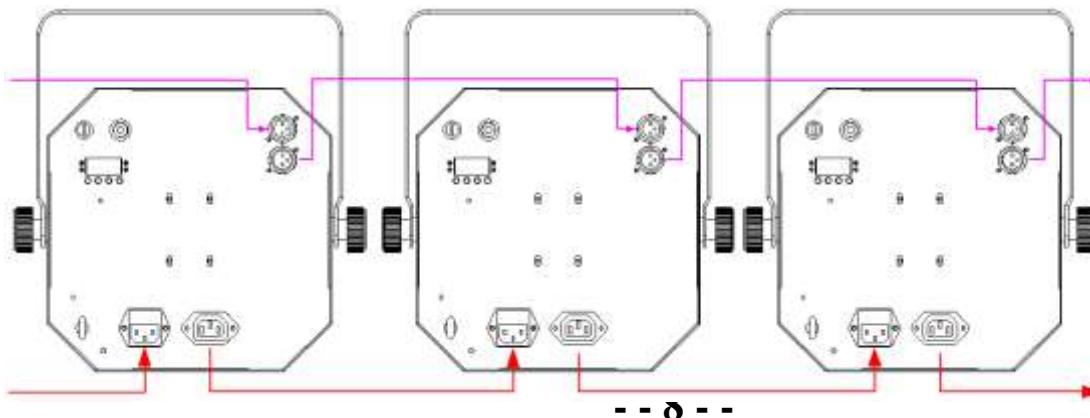
3 DMX+

10CH for example

First (address 001)

Second (address 011)

Third (address 021)



-- 0 --

DMX in

DMX out to next light

八、DMX address setting

Each fixture must set a specific starting address. When receiving signal transmission, fixture will receive channel control signals which from the starting address.

According to different requirements or easy to use, the user can set many value fixtures to the same address, also can set up a separate address for every device.

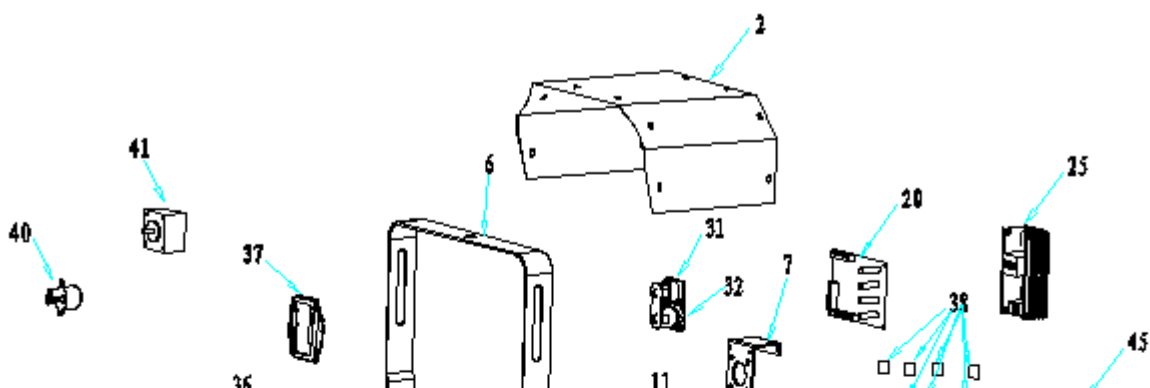
If you set the same address, all the devices will receive from DMX channels signal. All connecting fixtures are jointly controlled, controller can't separate control a device.

If you set a different address, each device will be separate from its particular set the starting address and begin accepting DMX512 control signal, so that more convenient separate control one device.

Using this method must be based on channel quantity of device to determine a starting address.

This light has 10 channels. When you use 10CH, you should set the starting address of the first unit to 1, the second unit to 11(10+1), the third unit to 21 (11+10), and so on.

九、Structure and material



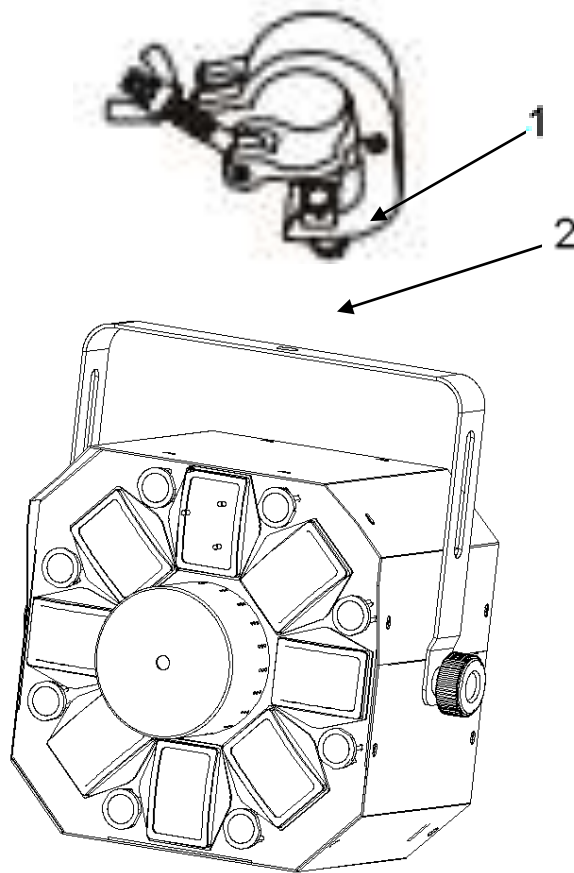
LED Strobe Laser Light User Manual

No.	Model No.	Name	quantit	Material No
1	SPL-RG-301-04	Base plate	1	311003111
2	SPL-RG-301-05	Top cover	1	311006073
3	SPL-RG-301-03	Back plate	1	311002074
4	SPL-RG-301-02	Front plate	1	311001100
5	SPL-RG-301-06	Clapboard	1	311020001
6	SPL-RG-301-07	Handle	1	316001088
7	SPL-RG-301-09	Head cover	1	311012014
8	SPL-RG-301-08	Motor stand 1	1	313001058
9	SPL-RG-301-10	Locating plate	1	321001014
10	SPL-RG-301-11	Motor stand 2	1	313001059
11	SPL-RG-301-12	Reflection plate	1	313028001
12	SPL-RG-301-13	Reflection dish	4	322013007
13	SPL-RG-301-14	FPC	1	315001100
14	SPL-RG-301-16	Red laser plate	1	313003010
15	SPL-RG-301-15	Green laser plate	1	313003008
16	SPL-RG-301-18	Reverse bracket	1	314001013
17	SPL-RG-301-17	Stand flange	1	313001060
18	SPL-RG-301-19	Motor flange	1	319001030
19	13*10*1.1mm	Pass red, reflect green	1	302005003
20	MB-29	Main Board	1	205001115
21	MB-22A	LED Driver Board	1	205002023
22	ABL-54A	Aluminum base plate 1	1	205003102
23	ABL-55A	Aluminum base plate 2	8	205003103
24	LB-RG1	Power	1	203022001
25	GZLU90-S 12V-7.5A	Switch power	1	204001056
26	AB-24A (with indicator light)	Display board	1	205004019
27	Red Laser: 100MW/650NM	SPL-R180B4	1	202109007
28	Green Laser: 50MW/532NM	SPL-G300H2	1	202008005
29	male, 250V,10A	Power socket	1	301923008
30	250V/10A, with fuse	Power socket	1	301923002
31	IN, /K3F2C-B	Dmx in (male)	1	301909007
32	OUT,/J3F2C-B	DMX out (female)	1	301909008
33	3010, DC12V,0.08A	Fan	1	301701025
34	M8*12	Handle screw	2	306020003
35	25mm stand, 45 degrees lens	LED lens parts	8	302018003
36	60*39.5*9.5	convex mirror	8	302012028
37	Plastic parts	convex lens holder	8	303010012
38	14*14*1.2mm	Shivering glass	80	302019026
39*	HYS8-12, ϕ 40*2, ϕ 3mm	8 grating	1	302001108
40	24BYJ48-36, DC12V	Step Motor	1	301601012
41	39HB105C-12	Step Motor	1	301601004
42	ϕ 20* ϕ 8*3.0mm	Rubber mat	2	303002004
43	M6,Outer ring 20mm	Ring	1	306019007
44	ϕ 12	Safety lock	1	308010001
45	M16,中心 6mm, steel	Plug	1	301935004
46	meteor shower 020T, 10*10*1.1mm	Grating filter	1	302001104

十、Installation

1 Clamp

2 Handle



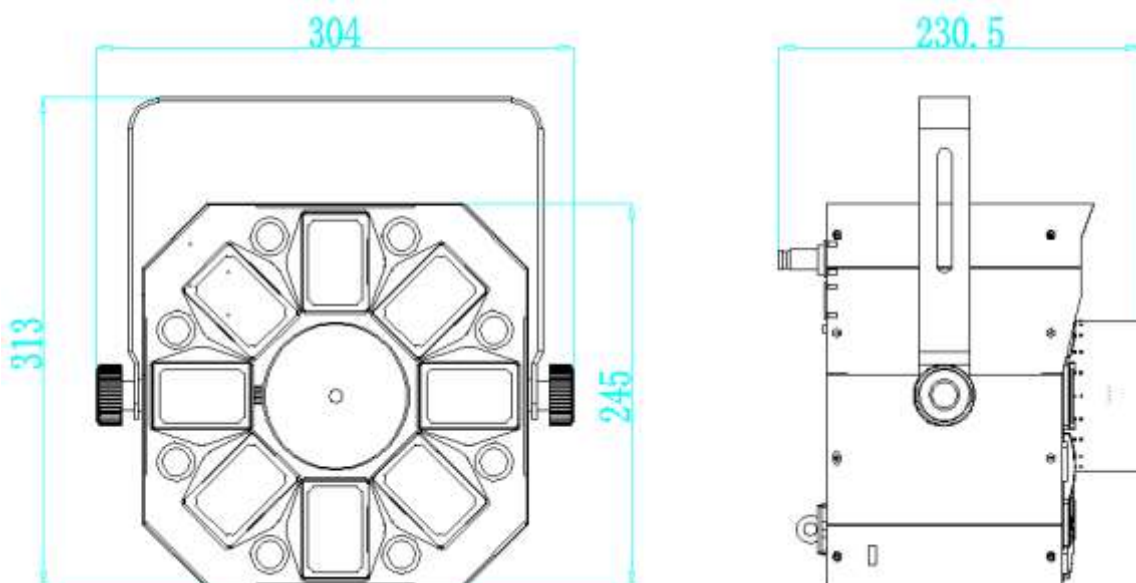
When install this equipment please make sure there's no flammable surfaces (decorated things, etc) within at least 2.5M and maintain minimum distance of 0.5M from the equipment to the walls.

Please make sure that there's no other equipment or decorating materials obstructed the exhaust fan and the vent-pipe.

Products should be install immobility.

In case of safety, it's very important that to connect the earth with line.

十一、Product size



Declaration

Cleaning and maintenance

Cleaning should be performed every 15-day period, by using a sponge which is dipped with alcohol, rather than wet cloth or other chemical liquid, to clean the mirror.



CAUTION

Cut off power before cleaning and maintenance!

Attention

Do not see directly light source when open the light, and make sure power off before do any installation or maintenance.



CAUTION!

Never look directly into the light source,
as sensitive persons may suffer an epileptic shock.



CAUTION

Wires connection must be professional person!

Warranty Card

This product is made of high-brightness transistor. We will provide 1 year warranty under the condition that user has operated the light normally and lifetime service. We won't provide warranty if the damage is caused by artificial or force majeure event. Cost of fittings should be charged by user if product need maintenance after 1 year .Please cut this warranty card and shipped it along with the product to our factory when applying for warranty.

Product:	Purchasing date:	Code of invoice:
----------	------------------	------------------

Warranty date: From	To
---------------------	----

User's name:	Add:
--------------	------

Company:	Tel:
----------	------