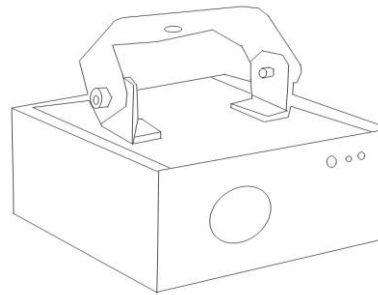




LL-848G

SD GREEN ANIMATION LASER SHOW SYSTEM



User's Manual



Read this manual before using. Do not attempt to open the housing or repair this device by yourself without contact us!

General instructions




Unpacking:

Thank you for purchasing this product. Please read user guide for safety and before using the product. Keep this manual for future reference. This product can create perfect laser programs and effects since it has passed a series of strictly tests before delivery. Please check the attachments listed on the page after opening the carton. Immediately upon receiving a fixture, carefully unpack the box. Check the box contents to ensure that all parts are present and that they are in good condition. If any part appears damaged from shipping, or if the box shows signs of mishandling, notify the shipper immediately. In addition, retain the box and all the packing material for inspection. In any event, save the carton and all packing material because, in case that you have to return the fixture to the factory, you will have to do so in its original box, with its original packing.

- 2. Power Cable: 1PCS
- 3. User Guide: 1PCS

Safety Notice:

Please read the following notes carefully because they include important safety information about the installation, usage and maintenance of this product. It is important to read all these notes before starting to work with this product.









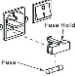

Lasers can be hazardous and have unique safety considerations. Permanent eye injury and blindness is possible if lasers are used incorrectly. Pay close attention to each safety REMARK and WARNING statement in the user manual. Read all instructions carefully.	
	There are no user serviceable parts inside the light. Any reference to servicing this unit you may find from now on in this User Manual will only apply to properly C we certified technicians. Do not open the housing or attempt any repairs unless you are o
	Please refer to all applicable local codes and regulations for proper installation of the light.
	Keep this manual for future consultation. If you sell the light to another user, make sure that they also receive this manual.



Troubleshooting

1. If the power supply indicator doesn't light up and the laser doesn't work, please check the power supply, the input voltage and the fuse.
2. In Stand-Alone operation, if the power supply indicator is light up and sound active indicator isn't light up, but the laser is shut off doesn't work.
 - A. Because sound is too small make for laser shut off in sound active, please increase the music volume or increase audio sensitivity with sensitivity knob, please check as below.
 - B. Please check if unit has been set up in slave mode, then set up in master mode.
3. In Master-Slave operation, slave unit don't function, please check as below.
 - A. Make sure to there's only one master in the chain, and the others are set in slave mode.
 - B. Make sure to control the unit without DMX console controlling.
 - C. Make sure to take a good quality power cable and connection.
4. In DMX mode operation, the laser is OFF and the DMX signal indicator is unlighted, please check as below.
 - A. Make sure to set up the DMX mode.
 - B. Make sure to have a good connection.
5. In DMX operation, the unit can't be controlled by the DMX console, but the DMX signal indicator is flashing, please make sure the DMX console and unit have the same channel.
6. If the unit is fail, please turn off the unit, then turn on again after 5 minutes.

Warranty Warnings:

1. Damages caused by the disregard of this user manual are not subject to Warranty. The dealer will not accept liability for any
2. Please consider that unauthorized modifications on the device are forbidden due to safety reasons. Please note that damages caused by manual modifications on the device or unauthorized operation by unqualified persons are not subject to warranty.
3. If this device will be operated in any way different to the one described in this manual, it may suffer damages and the guarantee becomes void. Furthermore, any other operation may lead to dangers like short-circuit, burns electric shock, etc.

	Avoid direct eye exposure to the light source while the fixture is on. Always disconnect the light from its power source before servicing. Always connect the light to a grounded circuit to avoid the risk of electrocution.
	This product is for indoor use only! Use only in dry locations. Keep this device away from rain and moisture, excessive heat, humidity and dust. Do not allow contact with water or any other fluids, or metallic objects.
	Make sure there are no flammable materials close to the fixture(s) while operating.
	Please prevent this light away from electrical shock
	When hanging this fixture, always secure it to a fastening device using a safety cable (not provided).
Power 110V 240V Ground	Always make sure that you are connecting the light to the proper voltage, as per the specifications in this manual or on the product's sticker. Never connect the light to a dimmer pack. Make sure that the power cable is not cracked, crimped or damaged. Ne
	The maximum ambient temperature (Ta) is 104 F (40 C). Do not operate the fixture at a higher temperature. In case of a serious operating problem, stop using this product immediately!
	Use cleaning tissue to remove the dust absorbed on the external lenses periodically to optimize light output.
	Do not remove or break the warranty label, otherwise it void the warranty.
	Always replace with the exact same type fuse, replacement with anything other than the specified fuse can cause fire or electric shock and damage your unit, and will void your manufactures warranty.
	There are no serviceable parts in the light. Please have all servicing and adjustments made by a qualified service engineer.

	Don't throw this product away just as general trash, please dispose of this product following the abandon electronic product regulation in your country.		To protect the environment, recycle packing material wherever possible.
--	--	---	---

Page 2

(7). Copy this folder "Disco" onto the SD card.

6. How to operate the laser to display animations?

At the rear panel, you can see:



"Manual" is Menu "Enter" is confirm "Previous" is UP "Next" is down

Key board operation:

Once powered on, the laser light keeps the same mode as previous use. At this time, please press the "Manual" to the Menu. The LCD will show "Mode Select" and others as follows:

sd auto show : Automatically search for all the ILDA files.

program Table: To display the program list.

key seek: To press the key board to search the target ILDA files.

audio mode: Sound active mode, to display the pre-built program in the laser show system.

auto mode: Automatically to display the pre-built programs in the laser show system.

dmx mode: To control the laser show system by DMX controller.

system set: To display different color, Sound Active sensitivity etc.

voic control set: "To be set in Main Menu

color set: To be set in Main Menu

Page 10

Technical Specification

1. Voltage: bi-voltage 110V -220V-250V AC, 50HZ-60HZ/ Fuse: 2A/250V
2. Rated Power: 30W
3. Scanner: 10Kpps scanning speed, High-speed optical scanner, big angle scanning
4. Laser:

Color	Wavelength	Power output
Green	532nm	50mW

5. Laser class: Class 3B

After trying the above solution you still have a problem, please contact your dealer or our company for service.

Page 11

Laser Safty Warnings

Potential laser injury hazard exists with this product! Read these Instructions carefully, which include important information about installation, safe use and service!

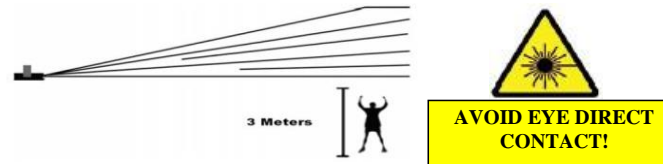
Caution

- * Avoid direct eye contact with laser light. Never intentionally expose your eyes or others to direct laser radiation.
- * This laser product can potentially cause instant eye injury or blindness if laser light directly strikes the eyes.
- * It is illegal and dangerous to shine this laser into audience areas, where the audience or other personnel could get direct laser beams or bright reflections into their eyes.
- * It is a US Federal offense to shine any laser at aircraft.

NON-INTERLOCKED HOUSING WARNING

- * This unit contains high power laser devices internally. Do not open the laser housing, due to potential exposure to unsafe levels of laser radiation. The laser power levels accessible if the unit is opened can cause instant blindness, skin burns and fires.

Installation



- * Laser effects projected 3 meters (9.8 ft) above the audience are eye safe. A survey should be taken to assess the likelihood of any reflective surfaces (such as high windows, chrome bars etc) bouncing stray beams back down into the audience.

* Using a fastening clamps on the light and tight to the ceiling in a strong hook..

* Make sure its correct power output and plug the power cable to the wall socket.

* Power must be in earth! Power on the light.

* Do not shoot the beams to the audience!

* Do not look direct into the laser aperture once the laser light is ON. Please pay attention to the Laser Danger Warning Sticker!

Page 3

H. Click "Save" to "disco1.ild". The file type must be "256 colors"!!



6. Working Modes:

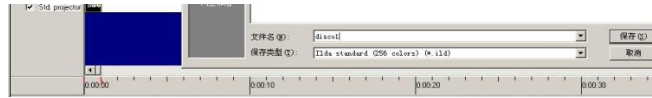
- (1) Laser: Sound Active, AUTO-Beam, AUTO-Animation
- (2) SD card: upto 2GB memory

7. Graphics & Effects: 256/128 beam show and animated graphics show patterns. SD Card supports “.ild” format picture which shows customize animations. All functions are shown through LCD indicator. The scanning speed of the animations from SD card can be set manually. Animations in SD card can be selected and displayed permanently or replayed times.

8. Size: L*W*H=160*168*80mm

9. inner box: 230*229*155(0.008m³), carton: 480*478*353(0.081m³), 8pcs/carton

10. Weight: 1.5Kg



I. Please make other ".ild" files according to the "A-H" steps, such as "disco2.ild", "disco3.ild", etc.

(4). Copy the folder "New" from SD card onto your desk. Rename this folder to "Disco" . Copy all the ".ild" files onto this folder, such as "disco1.ild", disco2.ild", "disco3.ild", etc.



(5). Rename the "new.prg" file name to "disco.prg". And open the "Disco.prg" file

Important: Prg name must be the same as folder name!



(6). rename the old ".ild" names to new names "disco1", "disco2", "disco3"... , and save this prg file.

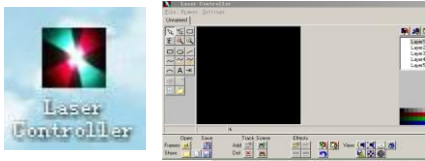
Disco1. ILD, 20, 1+
 Disco2. ILD, 20, 30+
 Disco3. ILD, 20, 1+
 ...

Features

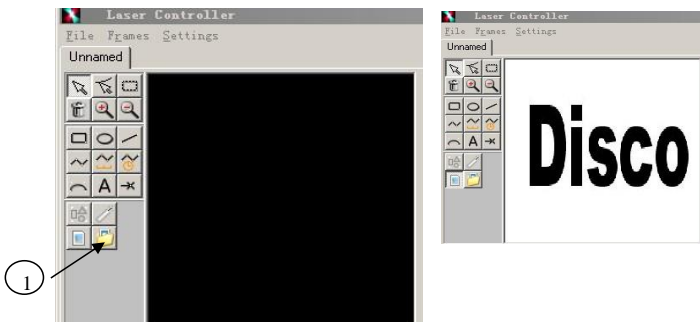
- 1. RGB full-color animation laser with high-speed optical scanner to create animated graphics,128 beam show and graphics show patterns.
- 2. Includes four working modes as Sound Active, AUTO-Animation, AUTO- Beam,for different applications.
- 3. The unit has BLACK OUT function.
- 4. SD card fully support . Get away from computer linking with the laser light
- 5. Design according to security and good performance, safer to human and environment.

Page 4

E. Open the "Laser Controller" software on your desk

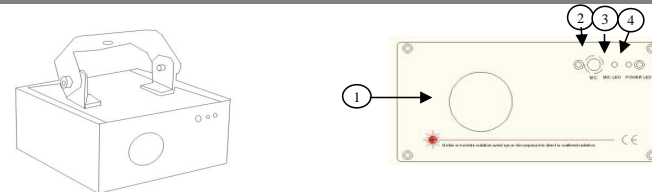


F. Click the "1" to open the "Disco.bmp"



Page 9

Front/Rear Panel



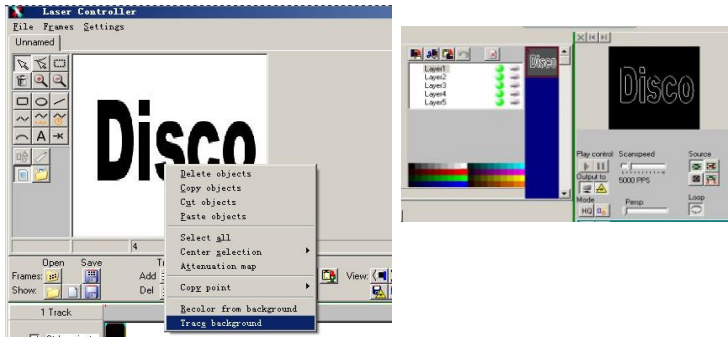
Front Panel Figure

- 1. Laser aperture
- 2. Sound active microphone
- 3. Sound active indicator:Blue
- 4. Power indicator:Red

Rear Panel Figure

- 1. LCD Indicator
- 2. Function Selector
- 3. SD Card Slot

G. Click the right mouse on the "Disco" and select "Trace Background"



Page 8

The mode allows a single unit to react to the beat of the music in the master mode.

1. Install the units in a suitable position (laying or appending).
 2. Set dipswitch to select Sound Active or AUTO mode.
 3. Turn on the unit power, the unit begins reset, then the unit begins working.
 4. The unit will react to the low frequencies of music via the internal microphone.
- Adjust the audio sensitivity knob on the back of the unit to make the unit more or less sensitive in sound active. The panel has LED indicating for sound active.

SD Card Function

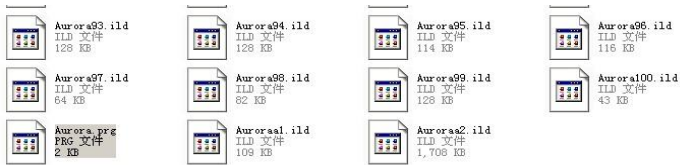
1. This program only support SD card with FAT32 format. If you buy new SD card, please reformat to FAT32 first.

How to format the new SD card:

1. Plug your new SD card onto your computer
 2. Click the SD card file on the right mouse and select "Format"
 3. Select "FAT32" and start to format the SD card
2. File name is suggested to have less than 8 letters and 3 letters for the format name.
3. It is suggested to use the SD card only for the laser light. Please do not put other documents into the SD card. This SD card can be put 100 folders and each folder can be put 256 files.
4. After you get our SD card, please plug it onto your computer. Then you will see 3 folders:



Open the first folder, you will see 102 ".ild" files and 1 ".prg" file



Double click the "Aurora.prg" file and select "Microsoft Office Word" to open this .prg file. You will see all the 102 files' name are listed on this "Aurora.prg" file. Every file is equal to one animation displayed in this laser.

Page 6

4. Audio sensitivity knob 5. X/Y Pattern Size Adjustment 6. +/-15V DC jack

Function & Setting

Sound Active

The change of the laser pattern is controlled by sound, that is, the rhythm of the sound control the effect of the changing laser pattern. Turning the sensitivity knob in the clockwise direction to increase the fixture's sensitivity to sound, the knob in the counter clockwise direction to decrease. The laser diode will automatically turn off after 8 seconds when the music stops.

AUTO

Auto cycles the built-in programs without being controlled externally. It has no laser OFF.

Page 5

Aurora97.ild, 10, 3+
 Aurora98.ild, 10, 2+
 Aurora99.ild, 10, 2+
 Auroraa1.ild, 10, 3+
 Auroraa2.ild, 5, 1+

What does it mean on this file name? e.g.

Aurora3.ild.18.1

1. "Aurora3.ild" means the file name of your ilda animation
 2. "18" means the displaying scanning speed
 3. "1" means the displaying time: 1 time
5. How to make your own folder with your own animations?
- (1). Use your own laser software to create ".ild" files. Your laser software must support export ".ild" file.
 - (2). Use our free laser software to create ".ild" files. Please send email if you need our free laser software.

Steps on how to create your own animations with our free laser software:

- A. Install the software onto your computer
- B. If you have a picture, such as "Disco" on your computer

Disco

C. Open the Photoshop on your desk, and open the "Disco.jpeg" picture



D. Save this "Disco.jpeg" picture to "Disco.bmp"



Page 7